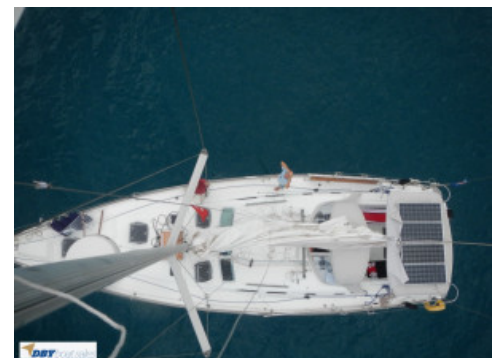




## Beneteau Oceanis 473

Sold



## Specifications

### Boat Details

Price	Sold	Boat Brand	Beneteau
Model	OCEANIS 473	Length	14.33
Year	2005	Category	Cruising Yachts
Hull Style	Single	Hull Type	Fibreglass
Power Type	Sail	Stock Number	INBU473045
Condition	Used	State	International
Suburb	International	Engine Make	

### Disclaimer

Our company offers the details of this vessel in good faith but cannot guarantee or warrant the accuracy of this information nor warrant the condition of the vessel. A buyer should instruct his agents and/or surveyors to investigate such details buyer desires validated. This vessel is offered subject to prior sale, price change or withdrawal without notice.

## Description

2005 well-maintained Beneteau Oceanis 473 now for sale with DBY Boat Sales.

The Beneteau Oceanis 473 is a make and model sought out by cruisers who want performance, comfort, and good value for money.

Gael Force 1 has had only 2 owners. The first chartered her briefly, and the current owner has only used the boat lightly from purchase in 2013.

This is a 3 double cabin version, each cabin with a separate head and shower. The Master stateroom has an island bed with private head, with electric toilet and stall shower.

The spacious saloon area ensures a very comfortable live-aboard boat. With lots of hatches and ports, the interior is light and bright.

2016 rigging.

Surveyed and engine serviced 2019.

Raymarine electronics and communications.

With generous fuel and water, and Watermaker, long passages can be achieved easily.

Australian registered. VAT not paid.

Ready to go. Lying Aegina, Greece.

---

## Features

Designer	Groupe Finot
Builder	Beneteau
Water (Potable) Capacity (l)	600
Hull Construction Material	GRP
Hull Type	Mono
Deck Construction Material	GRP
Length (feet)	47
Length (m)	14.3
Length Waterline (m)	13.36
Draft (m)	2.1
Keel/Ballast	Fin keel. 3300kg ballast. Cast iron keel fixed with L-shaped bulb with bolts and stainless steel backing plates. GRP spade rudder blade.
Number of Helms	2
Displacement	11012

---

### Disclaimer

Our company offers the details of this vessel in good faith but cannot guarantee or warrant the accuracy of this information nor warrant the condition of the vessel. A buyer should instruct his agents and/or surveyors to investigate such details buyer desires validated. This vessel is offered subject to prior sale, price change or withdrawal without notice.

Colour	White
Number Of Engines	1
Engine Standard	Yanmar 2005 - 4JH3TE
Engine Hours	4000
Horse Power (hp)	75
Drive Type	Shaft.
Number of Batteries	4 x 55Ah 12vDC service batteries joined in parallel to supply 220Ah @ 12vDC. 1 x 55Ah 12vDC engine start battery. 12vDC/ 220vAC Battery charger.
Fuel Type	Diesel
Fuel Tank Capacity (L)	180
Propeller	3 blade
Steering System	Cable steering + emergency tiller.
Accommodation Notes	3 double cabin with ensuite's version. 3 heads. 4 double berths. Master Stateroom has an island berth and private head with electric toilet and stall shower. Mahogany coloured woodwork. Teak and Holly covering to cabin sole. Blue fabric upholstery.
Number of Berths	8
Number of Showers	3
Shower Type	42L hot water tank. Hot and cold pressurised.
Number of Toilets	3
Toilet Type	1 x electric, 2 x manual.
Number of TVs	1
Holding Tank (L)	3 holding tanks
Galley Notes	Galley to starboard.
Stove	Eno gimballed S/S gas cooker with 4 burners, oven, grill.
Refrigeration	2. Top loading and front loading.
Number of Freezers	1 x top loading
Number of Sinks	2
Entertainment and Appliances Notes	Pioneer CD Player/ Radio with saloon and Cockpit speakers. Bulkhead mounted TV. Bulkhead mounted TV in forward Owner's cabin.
Anchor / Winch	Rocna 33kg anchor. 100m anchor chain. Kedge anchor with chain and warp. 2 x Harken 54 ST dual speed self-tailing Genoa winches close to helm

#### Disclaimer

Our company offers the details of this vessel in good faith but cannot guarantee or warrant the accuracy of this information nor warrant the condition of the vessel. A buyer should instruct his agents and/or surveyors to investigate such details buyer desires validated. This vessel is offered subject to prior sale, price change or withdrawal without notice.

---

	pedestals. 2 x Harken 40 ST dual speed self-tailing secondary winches. 12vDC Lofrans electric Windlass.
Bilge Pump	1 x electric, 1 x manual.
Deck Gear	Passerelle. Transom shower. Boarding/ swimming ladder.
Mast/Rigging	2016 standing rigging. Masthead rig with Z Spar aluminium mast and double aft-swept spreaders. Keel-stepped mast. Z Spar book with rigid cased vang. Coach roof mounted main sheet track. Twin backstay.
Sail Inventory	Fully battened Main. Furling Genoa.
Electrics	Inverter. Shore power inlet. 12v circuit, with 220vAC via shore power or inverter. 2 x Solar panels mounted on custom frame over bimini. 2 x 12vDC 80amp engine-mounted alternators. 12v CLD Inverter powers the refrigeration system + 220v socket at chart table. Electrical control panel with thermal breakers. 12v sockets. 230vAC shore power supply protected with circuit breaker and distribution system. 230vAC sockets throughout interior.
Electronics Navigation	Raymarine ST60 - Wind, Speed & Direction. Log/ Speedometer. Navigation centre. Raymarine RL70C Chart Plotter. Depth sounder. Repeaters. Raymarine ST6001+ Autopilot. 2 x Plastimo Compass.
Dinghy	Inflatable dinghy with 5hp Yamaha outboard (2016).
Covers	Bimini top. Additional sides create cockpit tent. Lazy Bag. Lazy Jacks. Spray hood (2013).

---

**Disclaimer**

Our company offers the details of this vessel in good faith but cannot guarantee or warrant the accuracy of this information nor warrant the condition of the vessel. A buyer should instruct his agents and/or surveyors to investigate such details buyer desires validated. This vessel is offered subject to prior sale, price change or withdrawal without notice.

---

Safety Gear	8 person life raft. Fire extinguishers. Fire blanket.
Watermaker / De-Sal	160L/ hour - 220v.
GPS	Garmin
Radio	Raymarine 54E VHF with DSC
Remarks	Yacht is categorised "Ocean - A" for safety requirements.
Vessel Name	GAEL FORCE 1

---

---

**Disclaimer**

Our company offers the details of this vessel in good faith but cannot guarantee or warrant the accuracy of this information nor warrant the condition of the vessel. A buyer should instruct his agents and/or surveyors to investigate such details buyer desires validated. This vessel is offered subject to prior sale, price change or withdrawal without notice.